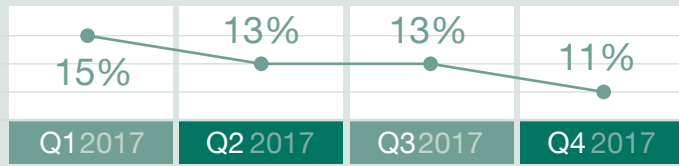
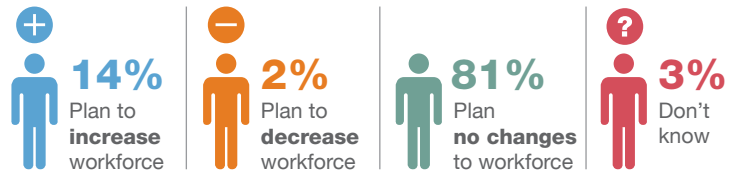


## NEW ZEALAND Q4 2017

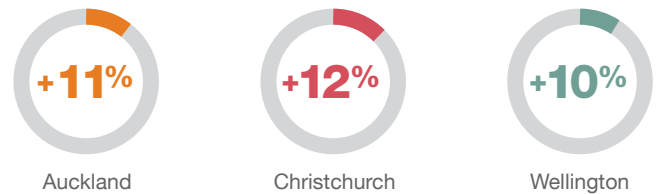
**+11%** New Zealand's Q4 2017 Net Employment Outlook



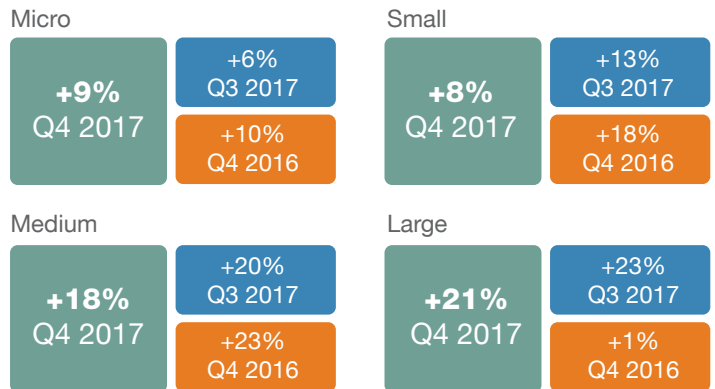
Over **650** New Zealand employers were asked:  
How do you anticipate total employment at your location to change in three months to the end of December 2017 compared to the current quarter?



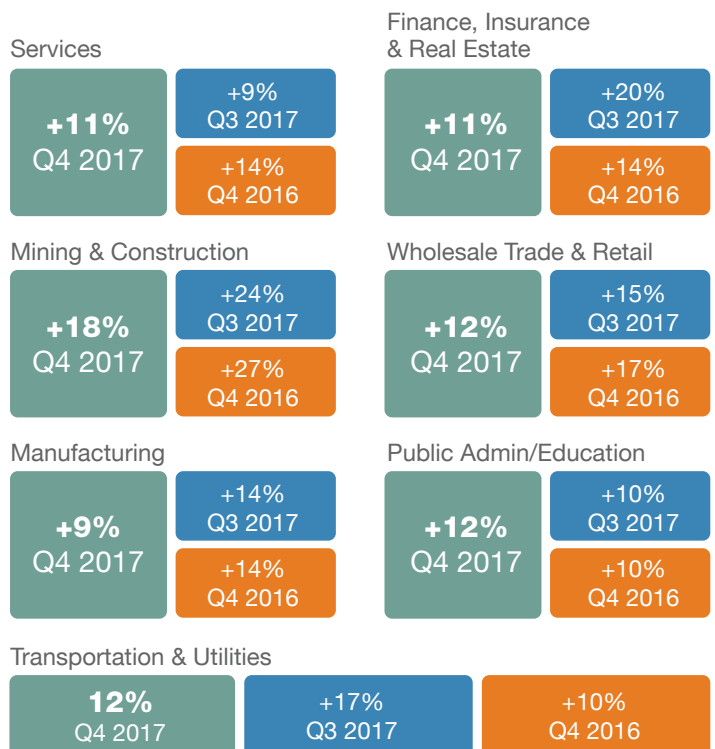
### Q4 2017 Hiring intentions



### Hiring intentions via organisation size:



### Hiring intentions via sector:



**Global Q4 2017 Net Employment Outlooks**  
Based on interviews with over **59,000** employers in **43** countries and territories

\*Indicates unadjusted data